

# EE-210IR

## 3-Axis IR Dome Camera

- ❖ Winner-5
- ❖ DNR
- ❖ D/N Support
- ❖ Built-in IR LED 18pcs



### SPECIFICATIONS

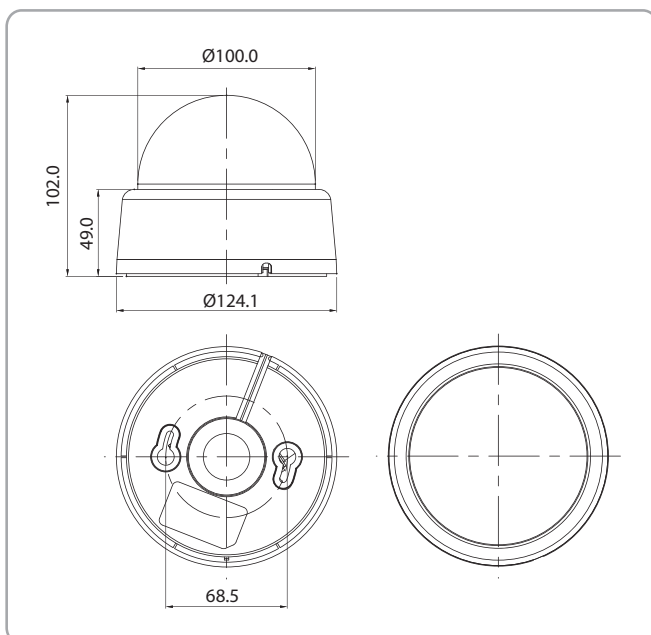
MODEL	EE-210IR-N	EE-210IR-P
Image Sensor	1/3" Interline Sony Super HAD CCD	
Effective Pixels	768 (H) x 494 (V)	752(H) x 582 (V)
Scanning System	2 : 1 Interlace	
Scanning Frequency	15.734KHz (H), 59.94Hz (V)	15.625KHz (H), 50Hz (V)
Resolution	600TV Lines	
Shutter Speed	Auto / Manual (1/60~1/120,000sec)	Auto / Manual (1/50~1/120,000sec)
Sens Up	ON / OFF (2x ~ 512x)	
S/N Ratio	52dB (AGC off, Weight on)	
Sync.System	Internal / Line lock	
White Balance	ATW, Outdoor, Indoor, Manual, AWC (1,700K~11,000K)	
OSD	Built - in	
D- Zoom	On / OFF (1x ~ 16x)	
DNR	On / Off (2D + 3D)	
Backlight Compensation	SSDR / BLC / HLC / OFF	
D&N	Color / Auto / B/W / EXT (Built In DC Motor Driver)	
P.Masking	On / OFF 12 Zones	
Min.Illumination	0 Lux (IR ON)	
Lens	f=2.8~11mm Vari-focal (Fixed 3.6mm)	
Video Output	CVBS :1.0Vp-p, 75 ohm composite	
Power Supply	12VDC ±10%	
Power Consumption	12VDC, 450mA	
Operating Temp.	-10°C ~ 50°C	
Operating Humidity	30%RH ~80%RH	

### FEATURES

- 1/3" Interline Sony Super HAD CCD
- High resolution 600TV Lines
- Winner-5 DSP
- Built-in IR LED 18pcs
- DNR, SSDR, TDN support
- Easy operation by on screen display
- Wall or Ceiling mounting through internal 3-Axis Gimbal
- Safety strap holds dome cover in place while making adjustments
- Vari-focal Lens (2.8mm ~ 11mm)
- Dome size :100Ø
- Plastic housing for indoor application

### DIMENSIONS

Unit : mm



### MODEL SELECTION

\*\* EE-210IRAR : Same spec With Dual Voltage and 24pcs IR built in

### CONNECTIONS

