



General

The AVWCD-325 offers resolution of more than 540 TV lines with maximum volume ranges of 120 dB. It has low light sensitivity of 0.3 lux to provide greater color quality for images and clarity in detail, even in low light levels. Designed to be free from glare, the camera permits detailed recognition even against extreme backlight conditions.

Features

- High Resolution 540TVL WDR color dome camera
- Built-in varifocal lens 3.8-9.5mm, F 1.2 DC-Iris
- 1/3" CMOS sensor and DPS (Digital Pixel System)
- Super Dynamic range up to 120 dB
- Noise ratio >48 dB
- Progressive With Segmented Frames (PsF)
- Horizontal resolution: 540 TVL, 720x540 pixel
- Slow Shutter up to 8x
- Dual voltage (AC24V/DC12V)
- Test Video output via 3.5mm phone jack
- IP67 rating, Aluminum Die-casting Rugged Vandal Proof Camera
- Wall or ceiling mount with internal 3-axis camera bracket
- Surface or Flush mount with the supplied surface mount adapter box
- Safety strap holds dome cover in place while making adjustments
- Fits over a standard 2-gang box

Specifications

Sensor	1/3" sensor CMOS
Dynamic Range (max.)	120 dB maximum
Horizontal Resolution (TV lines)	540 TV lines
Picture size (H x V)	720 x 540 pixel
Transfer Rate	50 fps (PAL); 60 fps (NTSC)
Light Sensitivity	0.3 lux (0.06 lux in Slow Shutter mode)
Slow Shutter	Up to 8x
Signal to Noise Ratio	> 48 dB
Video Standard	PAL / NTSC selectable in menu
Signal Formats (video)	CVBS, 75 ohm (PAL and NTSC)
Synchronization	Internal
Adjustable White Balance	ATW, AWB, manual (2000 K to 11000 K)
Backlight Compensation	adjustable backlight zone
AGC	brightness-offset and gain limit selectable
Gamma Correction	set by preset choice
Progressive Scan	Yes
Presets	Universal, Details 1, Details 2, Indoor/ Shadow, Indoor, Fluorescent, Low Light
Day&Night	Yes
OSD Menu	OSD: DIP switch control
Lenses	DC Autoiris lens: 1:1.2, 3.8 - 9.5 mm (D&N)
Video Output	BNC
Video Preview Output	phone jack
Power Supply	DC12V (10.2~14.5) AC24V (AC22V~AC26V)
Power Consumption	230mA (AC24V)
Degree of Protection	IP67
Temperature	0 ° to 50 °C, 0 ° to 35 °C recommended
Certifications	CE, FCC
Dimensions	Ø approx. 140 mm, height approx. 120 mm (Appr. 1,000 g)

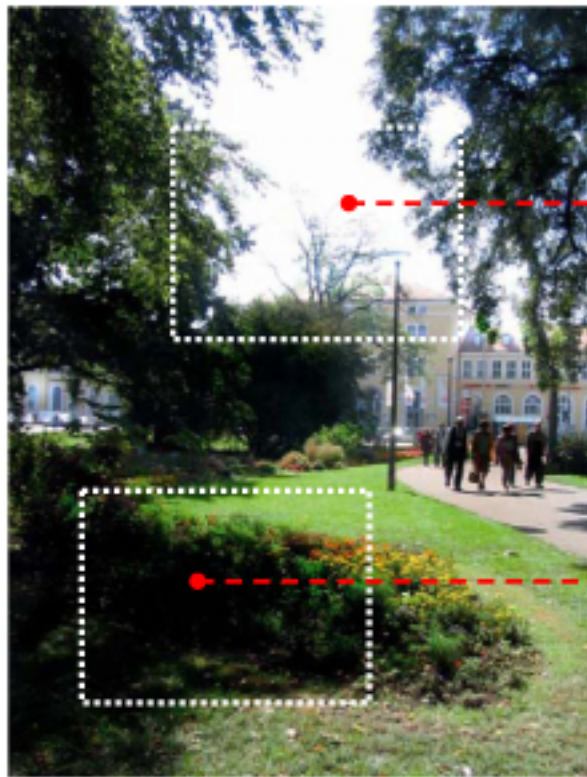


Conventional CCD camera

vs. AVWCD-325 DPSCamera

Through the innovative sensor concept, every pixel uses an independent strategy for exposure, to provide the ideal saturation. This means that even sites affected by high-contrast lighting conditions can be captured and documented with an outstanding picture quality that was simply not possible previously.

- *Super Dynamic Range*
- *No blooming, smearing or flaring*
- *Exceptionally detailed and true-color pictures*
- *Differentiation of colors in very bright and dark areas of the picture*
- *Better signal to noise ratio*
- *Well exposed, never over exposed pixels*
- *Considerably more stable automatic control*
- *Progressive Scan (no interlace, no comb-effect)*



Short Exposure

Long Exposure



Examples



ATM



Outdoor



Window